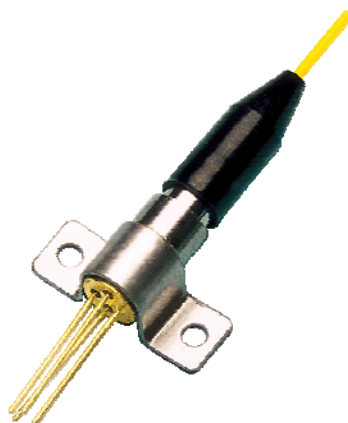


Features

- MQW 1550nm DFB LD
- Low threshold current
- High output power
- Built-in InGaAsP monitor PD
- Wide temperature range operation
(Tc=-45 to +85°C)



Applications

- CATV Reverse Transmission 回传激光器

Absolute maximum ratings

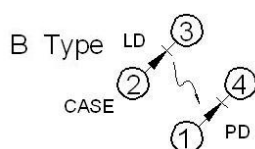
Parameter	Symbol	Min.	Max.	Unit	Test condition
Storage temperature	T _{st}	-40	+100	°C	-
Operating temperature	T _{op}	-40	+85	°C	-
Reverse voltage	V _R		2	V	CW
Soldering temperature/time			260/10	°C/S	-

Optical & electrical characteristics

Parameter	Symbol	Min.	Typ.	Max.	Unit	Test condition
Center wavelength	λ_c	1290	1310	1330	nm	-
Threshold current	I _{th}	-	5	15	mA	1310nm, 25°C
Spectral width	$\Delta\lambda$	-	0.5	1	nm	CW, I _{th} +20mA
Side mode suppression ratio	SMSR	30	40	-	dB	
Output power	P	-	2	4	mW	CW, I _{th} +20mA
Operating voltage	V _{op}	-	1.1	1.5	V	CW, I _{th} +20mA
Rise/ Fall time	T _r /T _f	-	0.3	0.7	nS	CW, I _{th} +20mA
Monitor current	I _m	0.1	0.7	-	mA	CW, I _{th} +20mA
Optical Isolation	Iso	30	-	-	dB	25°C

备注：用户可根据需求选择是否带内置隔离器

PIN assignment: (bottom view)



- pin 1: Monitor Diode Anode
- pin 2: Laser Anode and Case Gnd
- pin 3: Laser Cathode
- pin 4: Monitor Diode Cathode

Saddle Type:

